

## Appendices

### Appendix 1: Potential Carbon reduction measures for Tamworth Borough Council

#### **Reducing CO<sub>2</sub> Emissions in the Built Environment**

- Require all proposals to meet or exceed Building Regulations through energy efficiency alone
- New proposals should be 'futureproofed' to facilitate uptake of low-carbon heating, onsite energy generation and energy storage.
- Aim to achieve Net Zero regulated & unregulated emissions.
- Consider requiring developers to conduct Lifecycle Carbon Assessments (LCA) and monitor & report on operational energy use and CO<sub>2</sub> emissions.
- Set high standards for water efficiency and conservation including rainwater collection.

#### **Climate Risks & Adaptation**

- Direct / restrict future development to areas with lower flood risk.
- Require planning applications to consider long term flood risk projections in assessing flood risk and SuDS design.
- Ensure all future development considers the urban heat island effect in its design.
- Require planning applications for future developments to consider thermal comfort, e.g. through a dedicated overheating assessment (in line with CIBSE TM52 or equivalent) that considers high-emission climate projections.

#### **Holistic Interventions in Development**

- Incorporate circular economy principles such as designing out waste, adaptability, reusability etc.
- Consider requiring applicants to undertake a BREEAM or HQM assessment (or similar) with a minimum target for relevant credits achieved.
- Integrate and co-locate green and blue infrastructure with pedestrian and cycle routes and sustainable drainage systems (SuDs).
- Integrate LZC technologies into the built environment.
- Specify locally sourced materials with a low environmental impact.

#### **Carbon Sequestration & Natural Capital**

- Mitigate against the loss of green spaces and habitats, and seek to improve woodland, heathland and other habitats.
- Identify ways to ensure that biodiversity, carbon sequestration and amenity are all considered as part of land management strategies.
- Ensure ecological experts are involved in the writing of planning conditions (where relevant).
- Increase sequestration on Council-owned land (e.g. areas of greenspace including parks and gardens; linear parcels and green infrastructure such as verges and green spaces alongside roads; and the 'greening' of grey infrastructure in urban settings).

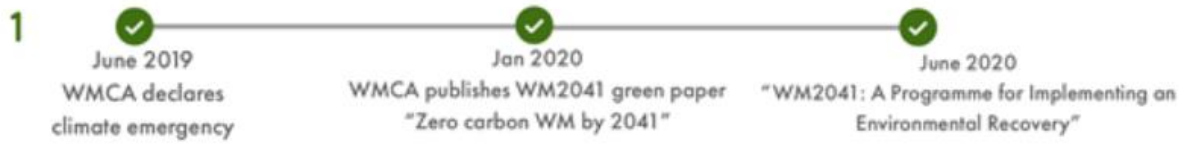
#### **Low & Zero Carbon (LZC) Technologies**

- Require developments to demonstrate how layout, orientation and massing has been designed to maximise opportunities for on-site renewables.
- Set a target for the proportion of energy demands to be met from on-site renewables.
- Increase support for LZC energy developments that meet local criteria for acceptability and seek to broaden those criteria.
- Encourage the development of heat networks where appropriate.

#### **Sustainable Transport**

- Enhance the provision of EV charge points.
- Collaborate with key market participants (e.g. WPD and the Government's Office for Low Emission Vehicles) to facilitate the transition to EVs.
- Keep informed of significant changes in hydrogen vehicle markets as they continue to develop.
- Co-locate PV canopies with existing or future parking provision.
- Ensure that the design and layout of developments will reduce reliance on private vehicles while promoting walking, cycling and public transport.

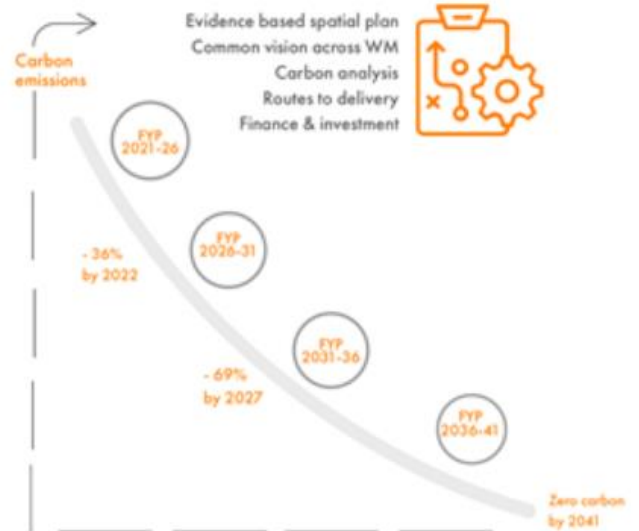
## Appendix 2: WM2041 – A Programme for Implementing an Environmental Recovery



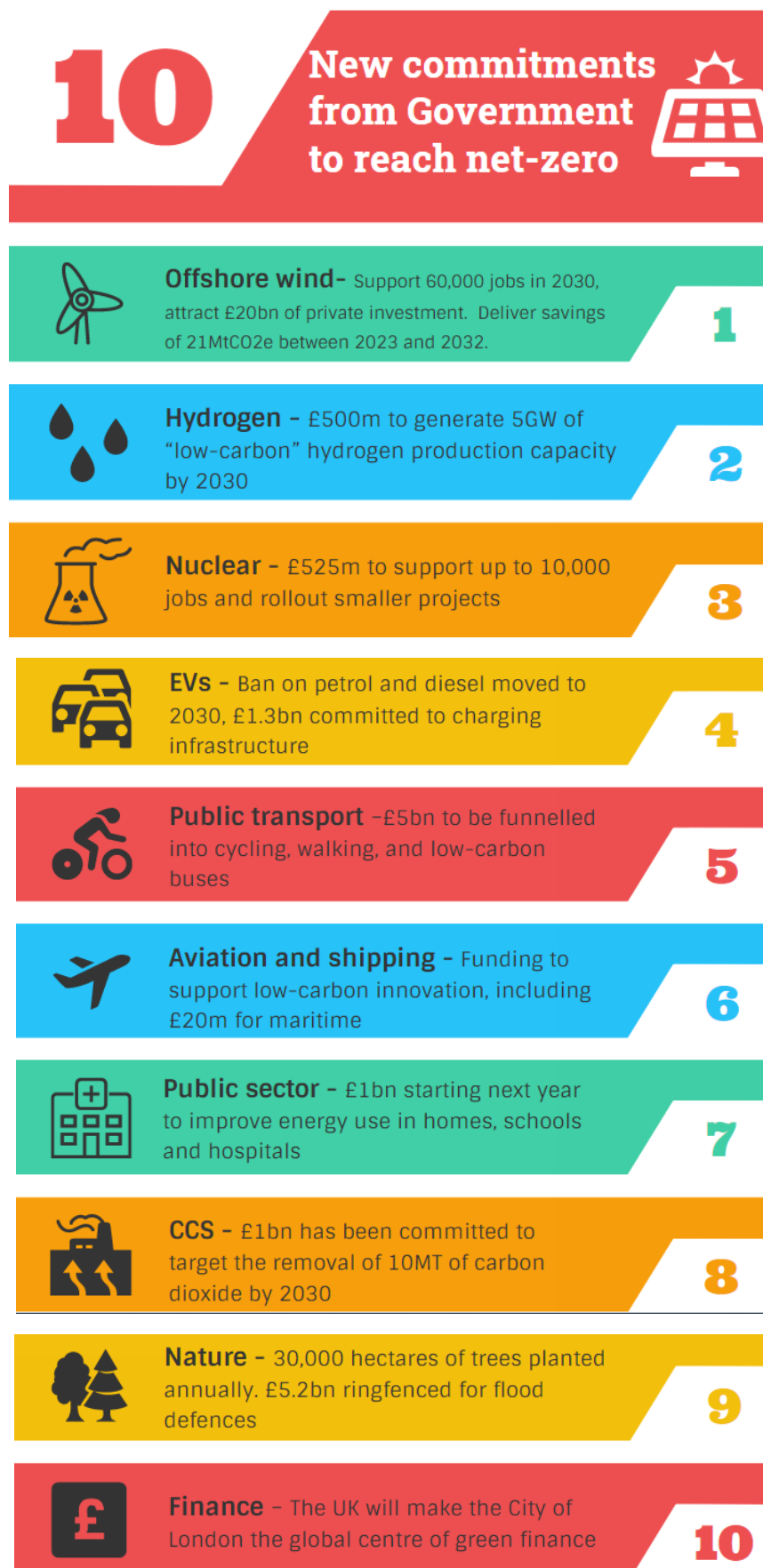
### 2 2020 Activity



### 3 WM2041 Five Year Plans



## Appendix 3: Government's Ten Point Plan to reach Net Zero Carbon



This page is intentionally left blank